



## Company History

Introducing ourselves as one of the pioneers in Construction Industry, Shreedham Group has been a Real Estate Developer & Builder since 28 Years...And still counting!

Established in 1987, Shreedham Group being a Mumbai based company, having its registered office at Malad, has been renowned for offering Customized Apartments and Innovative Infrastructure. We cater to the requirements of Corporate as well as Individual Clients with Commercial & Residential complexes.

Our credibility has been authenticated & recognized by ISO 9001:2000 Certification, acknowledging our ever-evolving Quality Management System and meeting the latest Customer and Regulatory Requirements.

Having a dedicated team of Highly Qualified Engineers and Industry Professionals, our company has been committed to equal or exceed standards that are demanded. We believe in profitable, sustainable and long-term relationships with all the stakeholders (Clients, Suppliers, Employees, Contractors).

Being a staunch believer and implementer of Customer-centric Approach, we offer reasonably priced structures at unexcelled quality.

**Our agenda of offering unparalleled infrastructure is backed by the hidden agenda of bringing to you - The Future.**

**SHREEDHAM GROUP** *is an organization where quality meets excellence, technology meets aesthetics and passion meets perfection.*

Prosperity knocked.... And we opened the door.

**SHREEDHAM CLASSIC** *A new life can begin today.....*

Premium 2 & 3 BHK Apartment  
The Shreedham Experience

We welcome you into this heaven for your family. Where beauty and tranquility reside. Where a house can transform into a life space abundant in comfort. Where your home is as comfortable as your environment beautiful. Where a new life can begin: a life like never before!

The shreedham Group is crafting Shreedham Classic with one dream: Creating one of the finest abodes in Goregaon west. We envision it to be a lifetime destination for your family. Built in the heart of the city, it has the best of all worlds. Utmost luxury, well planned safety, complete convenience, modern amenities and great connectivity with the city make Shreedham Classic a choice you will celebrate each day. A day that starts in comfort goes by in convenience and ends in utmost relaxation.

At a place your family will enjoy every moment for years and years to come. If it sounds so beautiful, imagine living here!



**DAY VIEW**



**NIGHT VIEW**

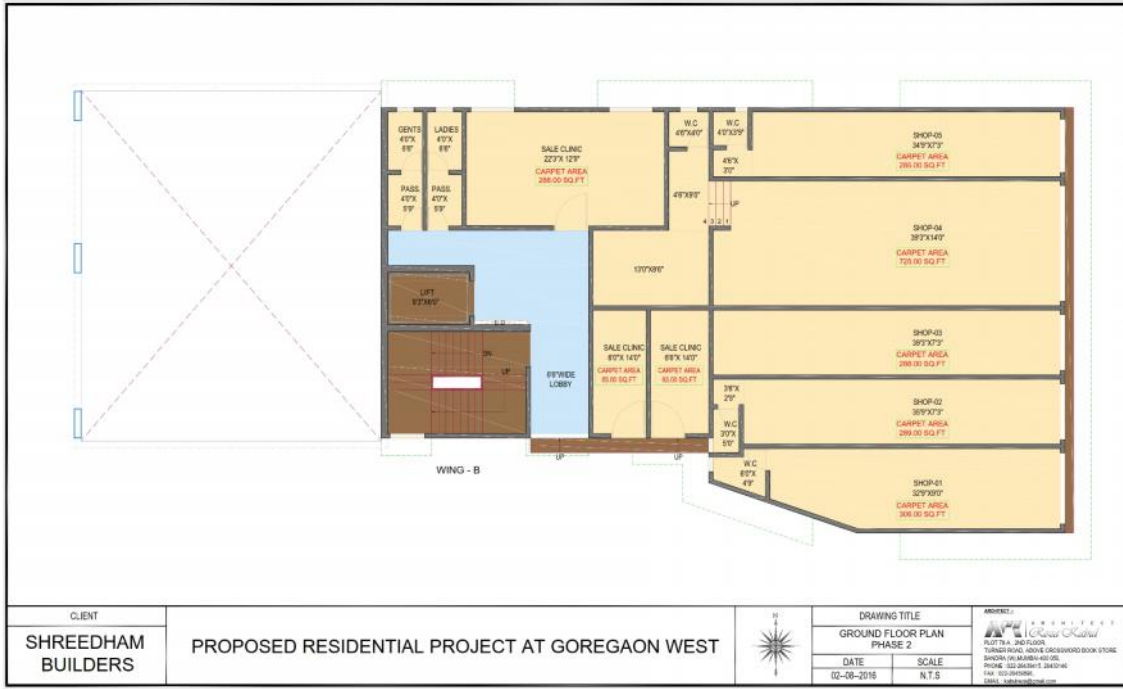


**BIRD EYE VIEW**



**SWIMMING POOL VIEW**

# COMMERCIAL GROUND FLOOR PLAN





# COMMERCIAL THIRD FLOOR PLAN



CLIENT  
**SHREEDHAM BUILDERS**

PROPOSED RESIDENTIAL PROJECT AT GOREGAON WEST



DRAWING TITLE  
**3RD FLOOR PLAN  
PHASE 2**

DATE	SCALE
28-07-2018	N.T.S.

ARCHITECT  
**S. S. Kulkarni & Associates**  
PLOT 15-A, 2ND FLOOR,  
TOWER B, 10th CROSS, GOREGAON WEST,  
MUMBAI-400 033, INDIA.  
PHONE: 022-26086400  
FAX: 022-26086401  
EMAIL: info@sskulkarni.com

# SHREEDHAM CLASSIC

## FLOOR PLANS





2 BHK



3 BHK



SHREEDHAM CLASSIC



**3 BHK**

SHREEDHAM CLASSIC



**FLOOR PLAN**

# APARTMENT AMENITIES

## 1. Living Room / Bedrooms

- ◆ Italian Marble Flooring – Living Room & Kitchen Passage,
- ◆ Vitrified / Wooden Flooring - All Bedrooms
- ◆ Video Door Phone at the Entrance
- ◆ Anodized Aluminium Windows
- ◆ Telephone, internet & cable TV Connection in Living / Bedrooms
- ◆ POP/ Gypsum finish for walls

## 2. Kitchen

- ◆ Italian Marble in kitchen
- ◆ Granite Kitchen Platform with modern stainless steel sings
- ◆ Service Platform
- ◆ Dado in Designer tiles
- ◆ Exhaust Fan
- ◆ Hot / Cold water Provision
- ◆ Dry Balcony

## 3. Bathrooms

- ◆ Italian Marble Flooring
- ◆ Italian Marble Full Height in Entire Bathroom
- ◆ Wash Basin with Counters
- ◆ American standard Finest Quality of Sanitary Ware / Fixtures & Fittings

(Roca / Hind ware)

- ◆ Storage geyser in all bathrooms
- ◆ Exhaust fan in all bathroom

## 4. Security Features

- ◆ Security Cabins at Main Entrance Gate
- ◆ Audio intercom System
- ◆ Round the Clock Security
- ◆ Finger Print Lock:-
- ◆ Unlock Mode- Finger Print / Password Mechanical Key
- ◆ Adopt Optical Finger Sensor Technology
- ◆ Quick Access - Authentication within two seconds
- ◆ Stores up to 500 fingerprints/ 10 passwords
- ◆ Video Door Phone

# SHREEDHAM CLASSIC

**YOUR GATEWAY TO THE CITY** with easy access to everything in the city, life at Shreedham promises to be a perfect experience. Based in **the heart of the city, in Goregaon**, you can enjoy the best in lifestyle and community experience.

The biggest advantage this location provides is convenience and connectivity! Being located on the **main S.V. Road**, just off link Road and connected to the W.E.Highway ensures that travel is never a problem. In fact, you have 2 railway stations within walking distance and also upcoming new Oshiwara Railway Station

Add to that close proximity to educational institutes, with hospitals and malls that are some of the best city. Being an integral part of the **western suburbs**, with access to everything an ideal lifestyle would need, it is nothing short of a dream come true.

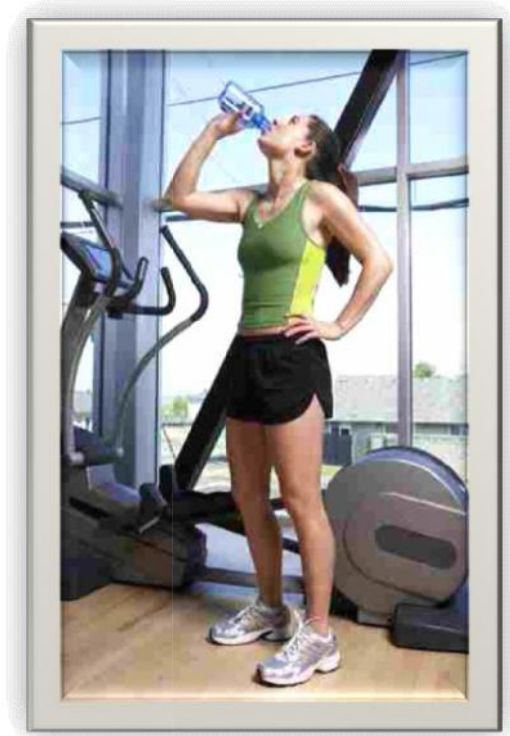
## PODIUM LEVEL PLAN



## AMENITIES

### 1. Gymnasium

Enjoy the best in fitness, every single day, without having to travel at all! With our fully equipped gym, complete your workout with Weight and cardio and get every day.



### 2. Swimming pool with toddlers pool



your weekends have the luxury of aquatic relaxation at our in house swimming pool; the ideal spot for a refreshing workout or a relaxed time with yourself.

### **3.Club House**

Give your family, friends and relatives a reason to bond, again and again. Come to the Club, a place that can become your daily dose of relaxation and the good times of life.

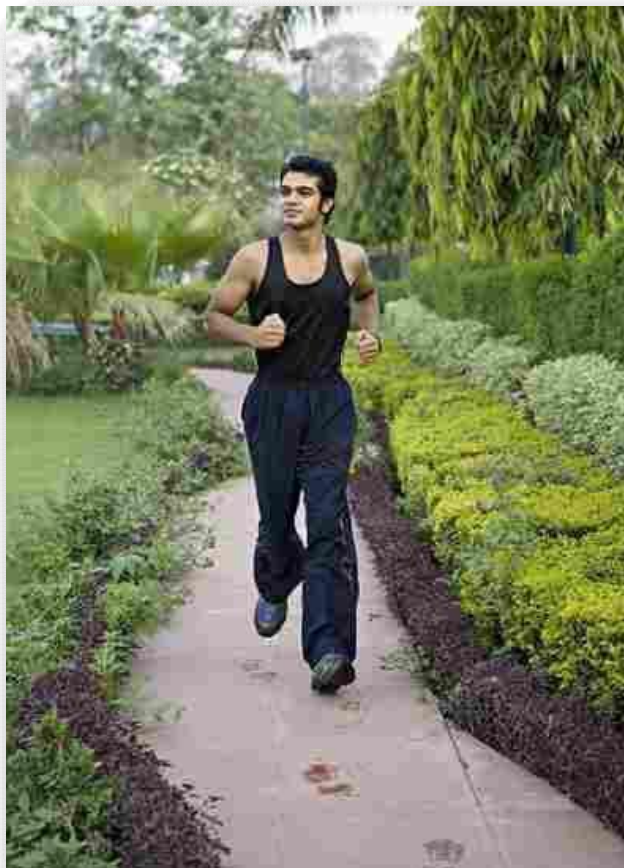
### **4.Indoor Games**

### **5.Club House / Health Club**

There are times when kids and youngsters seek an activity, but it is too hot outside, and for those times, we have our artfully designed indoor games section. So that there is never a dull moment around.

### **6.Jogging Track**

For those who love fresh air, green lawns and early mornings, we have the perfect setting—Jogger`s track. And just in case you don`t, you might just start loving it!



## 7. Jain Derasar

To give the entire area a feel of serenity beauty and calm, we have a sacred space for you- a temple. So that you can make every day auspicious and fruitful.



Good health means more than being physically active. The club supports each members exploration of what it means to develop personal insight in service to living in balance.

We provide you with latest and most comprehensive range of fitness equipment and our health club will make time as pleasant and production as possible. The sensational steam and sauna will relax you amidst the busy daily schedule.

*Fully Equipped, State of Art gymnasium, Landscaped Garden. Jacuzzi, Steam Rooms. Indoor Games Room, Yoga Room & Meditation Room, Jogging Track.*

## LOCATION FEATURES

Situation on main S.V. Road, Well connected to western express highway, Within close proximity to international School, Colleges, Education Institutions and Hospitals, 5 minutes walk from Goregaon railway station , Within close proximity with In orbit, Hyper city, D Mart mall, Just off Linking Road, International Airport-14 Km, Santacruz Domestic Airport-12 Km.

## SHREEDHAM CLASSIC LOCATION MAP



**LOAN ARE AVAILABLE FROM LEADING FINANCIAL INSTITUTIONS  
PROJECT IS APPROVED BY GOVERNMENT OF MAHARASHTRA**

Goregaon Site Office Address	SHREEDHAM CLASSIC, Beside ST John Universal School, Opp HDFC Bank, S.V.Road, Landmark-Cinemax Theatre, Goregaon (W)
Malad Corporate Office Address	SHREEDHAM CONSTRUCTION PVT LTD. 105 / 106, Vijay Industrial Estate, New Link Road, Next to Sai Honda Showroom, Chincholi Bunder, Malad (W), Mumbai- 400064, Tel- 022-65241730, 022-65109288, 022-42336999, 022- 28755111, Email: shreedh333@hotmail.com

**FOR MORE ENQUIRY PLEASE CONTACT ON 022-28755741/28755111/42336999  
Or EMAIL shreedhamsales@gmail.com**



[WWW.SHREEDHAMGROUP.CO](http://WWW.SHREEDHAMGROUP.CO)

WAITING FOR YOUR RESPONSE

THANK YOU

---